

Annual Report 2005-2006



Oklahoma **Museum of Art**
DONALD W. REYNOLDS VISUAL ARTS CENTER



Mission

The Oklahoma City Museum of Art fosters appreciation and enjoyment of the visual arts through exhibition, education, collection, and preservation.

contents

Executive Director's Summary	3
Acquisitions & Loans	4
Exhibitions.....	7
Film	11
Education & Public Programs.....	12
Board of Trustees & Committees.....	14
Museum Staff	15
Audience Development & Special Events	16
Development & Marketing.....	18
Volunteer Committees	21
Donor Recognition	22
Retail	25
Treasurer's Report.....	26

In Loving Memory



Wendy Mahsetky-Poolaw

Founding Librarian

2002-2006

Highlights of
2005-2006

- More than 130,000 visitors from all 50 states and 44 countries
- Memberships increased to 4,000 households
- Twelfth consecutive year of operating in the black
- Published *Chihuly Oklahoma City* with Portland Press
- Completed comprehensive Collections Plan as important guide for conservation and acquisitions
- Christian K. Keesee-Brett Weston Archive Collection increased to 210 works by second major gift of Brett Weston gelatin silver prints and complete portfolio
- Offered 169 classes and camps for record enrollments
- Record number of independent, foreign language, and classic film screenings of nearly 280
- Organized and presented an unprecedented three international exhibitions seen only in Oklahoma City
- Became one of three venues for *Roman Art from the Louvre* in 2008
- Published three exhibition catalogues, distributed by the University of Washington Press, and produced three audio tours
- Developed new Web site
- Implemented Professional Tour Operators Program and hosted 10,000 in tours



Leslie Hudson, Carolyn Hill, Mayor Mick Cornett, Ernesto Sanchez, and Carlos Garcia de Alba, Consul General of Mexico, at the Members' Preview for *Mexican Masters*.

I am pleased to report to you the Museum's accomplishments and activities during Fiscal Year 2005-2006. The Museum welcomed more than 130,000 visitors from all 50 states and 44 countries and increased membership to 4,000 households. The Museum met its financial goals, achieving its twelfth consecutive year of operating in the black, continuing to earn a substantial portion of its income, and increasing net resources to more than \$40 million.

In addition to the publication of *Chihuly Oklahoma City* by Portland Press, collections were strengthened by the completion of a comprehensive Collections Plan, an important guide for conservation and acquisitions. The Christian K. Keesee-Brett Weston Archive Collection increased to 210 works by a second major gift of Brett Weston photographs and complete portfolio. Records were set in Museum School classes and camps, as well as in the nearly 280 screenings of independent, foreign language, and classic films.

Unprecedented accomplishments in exhibitions include the organization and presentation of three international exhibitions, exclusive to Oklahoma City, as well as the Museum's designation as one of three venues for *Roman Art from the Louvre* in 2008. National recognition was increased by the publication of three catalogues, distributed by the University of Washington Press. More than 10,000 children in tours viewed the exhibitions.

With continued growth of all programs, governance was enhanced by the establishment of an Audit Committee; revised Code of Ethics and Investment Policy; and the development of a Document Retention and Destruction Policy. We acknowledge the continued, concerted efforts of the board, staff, and volunteers. We are grateful for the broad-based support of a committed membership and community, and we enthusiastically embrace our responsibilities and opportunities in the service of our mission.

Carolyn Hill
Executive Director



Andrew W. Evans, Helen and Bill Cleary with daughter Anne Stening, and Carolyn Hill at the donor reception on the Museum's Roof Terrace.

New Collections Plan Completed Photo Documentation and Research Contribute

During 2005-2006, the Museum completed its Collections Plan, an ambitious guide to strengthen the Museum's collection. The Plan was initiated in 2001 with the photo documentation of the entire collection on 35mm color slides and the subsequent creation of a comprehensive database of the collection. Additionally, research and evaluation was carried out by consultants specializing in European, American, Asian, and Decorative Arts. The Plan also followed an extensive conservation and frame restoration program. These, and the tireless research efforts of Chief Curator Hardy George, Ph.D.; Associate Curator Alison Amick; Registrar Matthew Leininger; and the Collections Committee, equal a thorough plan for the cultivation of the Museum's collection.

Christian K. Keesee - Brett Weston Archive Collection Increased

Christian K. Keesee, owner of the Brett Weston Archive, donated 100 gelatin silver prints and a complete portfolio of ten gelatin silver prints by American photographer Brett Weston. This gift, combined with an earlier gift, brought the Museum's Christian K. Keesee-Brett Weston Archive Collection to 210 photographs. Along with The J. Paul Getty Museum, the Whitney Museum of American Art, and the Center of Creative Photography, the Museum is now one of the largest repositories of Brett Weston photographs. These major gifts are the basis of an exhibition to be organized by The Phillips Collection, Washington, D.C., and curated by Stephen Bennett Phillips, in collaboration with the Museum.



Brett Weston (American, 1911-1993). *Botanical Abstraction, Century Plant*, ca. 1970. Gelatin silver print, image: 13 1/2 x 10 3/4 in. (34.29 x 27.31 cm.), sheet: 14 x 11 in. (35.56 x 27.94 cm.). The Christian K. Keesee Collection - Brett Weston Archive, 2006.060



Brett Weston (American, 1911-1993). *Dune Landscape, Shoshone*, 1969. Gelatin silver print, image: 10 1/2 x 13 5/8 in. (26.67 x 34.73 cm.), sheet: 11 x 14 in. (27.94 x 35.56 cm.). The Christian K. Keesee Collection - Brett Weston Archive, 2006.007

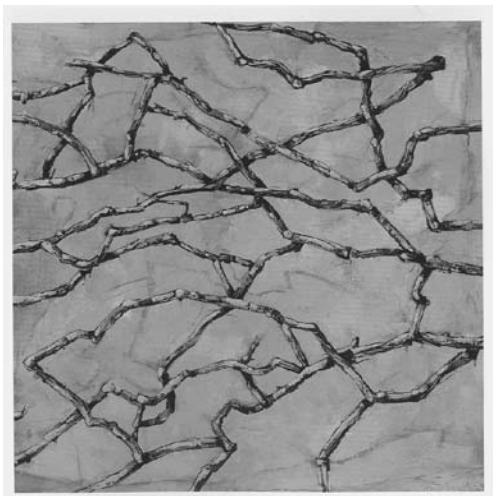


Brett Weston (American, 1911-1993). *New York, Church Doorway, Bowery*, ca. 1940. Gelatin silver print, image: 9 1/2 x 7 5/8 in. (24.13 x 19.37 cm.), sheet: 10 x 8 in. (25.4 x 20.32 cm.). The Christian K. Keesee Collection - Brett Weston Archive, 2006.005

110 Brett Weston Gelatin Silver Prints

- New York, Stairway, 47th Street, ca. 1940
- Cactus, c. 1950
- White Sands, Shrubs, ca. 1940
- Joshua Tree, Baja, ca. 1950
- New York, Church Door, Bowery, ca. 1940
- Dune, 1939
- Dune Landscape, Shoshone, 1969
- Water reflection, High Sierra, Pock on Pond, n.d.
- Rock Abstraction, n.d.
- Rock Abstraction, n.d.
- Kelp, ca. 1970
- Kelp in Water, ca. 1970
- Calligraphy, 1970
- Metal Transformer, Sky, ca. 1970
- Building Abstraction, Corrugated Metal, Alaska, 1973
- Water Reflection, ca. 1970
- Water Reflection Abstraction, ca. 1980
- Water Reflection, ca. 1980
- Building Reflection, ca. 1980
- Springs, ca. 1970
- Car Abstraction, ca. 1980
- Car Abstraction, ca. 1980
- Car Abstraction, ca. 1980
- High Sierra, ca. 1970
- Cactus, ca. 1970
- Vines, ca. 1980
- Cracked Ice and Plants, Alaska, ca. 1950
- Broken Glass, 1955
- Rock Abstraction, Alaska, ca. 1950
- Car Abstraction, ca. 1970
- Building Reflection, ca. 1970
- Building Reflection, ca. 1970
- Building Reflection, ca. 1980
- Locomotive, 1927
- Abstraction, ca. 1970
- Abstraction, ca. 1970
- High Sierra, Trees, ca. 1960
- Wood, ca. 1970
- Driftwood, ca. 1970
- Driftwood, ca. 1970
- Vines, ca. 1970
- Water Abstraction, Swamp, ca. 1970
- Rock and Pebble Abstraction, ca. 1980
- Rock and Pebble Abstraction, ca. 1970
- Rock and Pebble Abstraction, ca. 1970
- Mendenhall Glacier, ca. 1970
- New York Skyline, ca. 1940
- Metal Abstraction, Car, ca. 1970
- Dune Detail, ca. 1970
- Abstraction, Wax on Car, ca. 1980
- Abstraction, Wax on Car, ca. 1980
- Ice Abstraction, ca. 1970
- Kelp Abstraction, On Sand, ca. 1970
- Kelp Abstraction, In Water, ca. 1980
- Kelp Abstraction, On Sand, Thin, 1980
- Kelp Abstraction, On Sand, Thin, 1980
- Kelp Abstraction, On Sand, Thin, 1970
- Kelp Abstraction, On Sand, Thin, 1970
- Rock and Pebble Abstraction, ca. 1980
- Botanical Abstraction, Century Plant, ca. 1970
- Building Reflection Abstraction, 1981
- Building Reflection, 1981
- Liquid Abstraction, ca. 1980
- Liquid Abstraction, 1977
- Tree Trunk Detail, Hawaii, ca. 1980
- Ice Abstraction, 1977
- Glacial Ice, Alaska, 1973
- Botanicals, ca. 1980
- Botanicals, ca. 1980
- Botanicals, ca. 1980
- Metal and Paint, Abstraction, 1975
- Paint Abstraction, 1971
- Paint Abstraction, ca. 1980
- Water Reflection, 1971
- Water Reflection, 1981
- Ice Abstraction, 1969
- Ice Abstraction, 1969
- Ice Abstraction, 1969
- Ice Abstraction, 1975
- Ice Abstraction, 1971
- Ice Abstraction, 1973
- Metal Abrasion, 1977
- Metal Abrasion, 1975
- Wood, 1968
- Glacial Silt, Alaska, 1973
- Rock Wall Abstraction, 1976
- Rock Wall Abstraction, 1981
- Rock, 1974
- Rock Abstraction, 1974
- Driftwood on Sand, 1974
- Driftwood Abstraction, Alaska, 1973
- Mud Cracks, 1977
- Mud Crack, 1978
- Rock Abstraction, 1968
- Rock Abstraction, 1973
- Rock Abstraction, 1968
- Rock Abstraction, 1971
- Rock Abstraction, 1975
- Sand Rock, ca. 1980
- Rock Abstraction, ca. 1980
- Broken Glass, 1954
- Steps with Broom, New York, 1945
- Pines in Fog, Monterey, 1962
- Rock Formation, Point Lobos, 1963
- Kelp on Sand, 1954
- Cracked Paint, Garrapata, 1954
- Tree Roots with Succulents, 1951
- Black Window, Mariposa, California, 1950
- White Sands, New Mexico, Yucca, 1947
- Point Lobos, California, 1951

acquisitions & loans, cont.



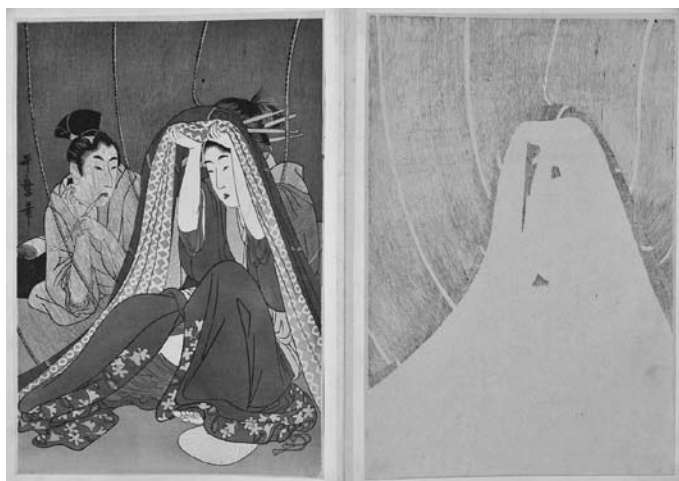
John Fincher (American, 1941-). *Orange Crush*, 2003. Oil on panel, 48 x 48 in. (121.92 x 121.92 cm.). Gift of the artist in memory of Mr. Don Eason, 2005.019

2004 University of Oklahoma Westheimer Artist-in-Residence John Fincher gave the Museum the painting *Orange Crush* in memory of his friend, Don Eason. The work was included in the exhibition *John Fincher: Boughs, Branches, and Limbs*, a 2004 collaboration between the Museum and the University of Oklahoma's School of Art. Fincher's works have been exhibited in national and international exhibitions and are in the collections of the Phoenix Art Museum and the Smithsonian Institution, among others.

Raymond W. Merritt donated a portfolio of ten Lucien Clergue cibachrome prints. A native of France, Clergue is a fine-art photographer, author, educator, and filmmaker and has been associated with some of France's most significant artists, intellectuals, and musicians. His photographs cover a range of subjects, including bullfighting, as seen here, and other traditional Provençal subjects.



Lucien Clergue (French, 1934-). *Moment of Truth*, 1989. Cibachrome print, image: 10 x 30 in. (25.4 x 76.2 cm.), sheet: 12 x 32 in. (30.48 x 81.28 cm.). Gift of Raymond W. Merritt, 2005.010



Unknown Artist. *Japanese Woodblock Print Demonstration Book*, 19th century. Color woodblock, open: 16 x 22 1/2 x 1/2 in. (40.64 x 57.15 x 1.27 cm.), closed: 16 x 11 1/4 x 1 in. (40.64 x 28.58 x 2.54 cm.). Gift of Aaron Enterprises, LLC, 2006.111

Aaron Enterprises, LLC, gifted the Museum a Japanese woodblock print demonstration book, which reveals the step-by-step process involved in creating a woodblock print. This method of printmaking was often used to illustrate books of fiction and popular tales. The demonstration book adds to the Museum's collection of over 1,100 prints.

With the help of numerous lenders and corporate and season sponsors, the Museum presented three Museum-organized special exhibitions to more than 130,000 visitors. The Museum's 2005-06 season opened with the exhibition *Artist as Narrator: Nineteenth Century Narrative Art in England and France*, a visual exploration of prose, poetry, legends, and myths through over 100 paintings, prints, and drawings. Introducing Oklahoma to the dominant Mexican artists of the 1930s and 1940s, *Mexican Masters: Rivera, Orozco, and Siqueiros, Selections from the Museo de Arte Carrillo Gil* exhibited 68 works by Diego Rivera, José Clemente Orozco, and David Alfaro Siqueiros as well as related works by Luis Nishizawa and Gunther Gerzo. *Tempests and Romantic Visionaries: Images of Storms in European and American Art* illustrated the sublime and sometimes destructive power of nature in over 70 paintings, drawings, and prints. Additionally, the Museum received a temporary loan of 32 exceptional works, exhibited in five second and third floor galleries as *Monet to de Kooning: Selections from the Davis Museum and Cultural Center at Wellesley College*.

Artist as Narrator: Nineteenth Century Narrative Art in England and France

Sept. 8 - Nov. 27, 2005

The exhibition was organized by the Oklahoma City Museum of Art, Hardy S. George, Ph.D., organizing curator.



PRESENTING SEASON SPONSOR
Inasmuch Foundation

SEASON SPONSORS

Chesapeake Energy Corporation
GlobalHealth
Kirkpatrick Family
MidFirst Bank
The Bowers Foundation
Cox Communications, Inc.
Devon Energy Corporation
Kerr-McGee Corporation
The Oklahoman

EXHIBITION SPONSORS

Oklahoma Arts Council
Oklahoma Humanities Council

EDUCATION SPONSORS

Sarkeys Foundation and
Sonic, America's Drive-In
Education Endowments

PRESENTING SEASON SPONSOR
Inasmuch Foundation

SEASON SPONSORS

Chesapeake Energy Corporation
GlobalHealth
Kirkpatrick Family
MidFirst Bank
The Bowers Foundation
Cox Communications, Inc.
Devon Energy Corporation
Kerr-McGee Corporation

EXHIBITION SPONSORS

Ad Astra Foundation
Kirkpatrick Family Fund
Oklahoma Arts Council
Oklahoma Humanities Council
Mr. and Mrs. James C. Meade
El Nacional

EDUCATION SPONSORS

Sarkeys Foundation and
Sonic, America's Drive-In
Education Endowments

Mexican Masters: Rivera Orozco, and Siqueiros

Selections from the Museo de Arte Carrillo Gil

Dec. 15, 2005-March 26, 2006

Organized by the Oklahoma City Museum of Art in collaboration with the Museo de Arte Contemporáneo Alvar y Carmen T. de Carrillo Gil, Armando Sáenz Carrillo, guest curator



Tempests and Romantic Visionaries: Images of Storms in European and American Art

April 21 - Aug. 13, 2006

The exhibition was organized by the Oklahoma City Museum of Art, Hardy S. George, Ph.D., organizing curator.

PRESENTING SEASON SPONSOR
Inasmuch Foundation

SEASON SPONSORS
Chesapeake Energy Corporation
GlobalHealth
Kirkpatrick Family
MidFirst Bank
The Bowers Foundation
Cox Communications, Inc.
Devon Energy Corporation
Kerr-McGee Corporation
The Oklahoman

EXHIBITION SPONSORS
Oklahoma Arts Council
Oklahoma's NewsChannel 4

EDUCATION SPONSORS
Sarkeys Foundation and
Sonic, America's Drive-In
Education Endowments



Monet to de Kooning: Selections from the Davis Museum and Cultural Center at Wellesley College

March 3 - Oct. 29, 2006

The exhibition was organized by the Oklahoma City Museum of Art.



PRESENTING SEASON SPONSOR
Inasmuch Foundation

SEASON SPONSORS
Chesapeake Energy Corporation
GlobalHealth
Kirkpatrick Family
MidFirst Bank
The Bowers Foundation
Cox Communications, Inc.
Devon Energy Corporation
Kerr-McGee Corporation
The Oklahoman

EDUCATION SPONSORS
Sarkeys Foundation and
Sonic, America's Drive-In
Education Endowments

Other exhibitions were *Hendrick Goltzius: The Passion*, *Brett Weston: Selected Works*, *Popular Arts of Japan: Prints of Hiroshige and Kunisada*, *Ben Shahn: The Rilke Portfolio, For the Sake of a Single Verse*, *Selections from the Westheimer Family Collection*, *Masterworks in English Silver of the Seventeenth and Eighteenth Centuries from the James C. and Virginia W. Meade Collection*, and *Crosswalks: Contemporary Street Photography*.

Hendrick Goltzius: The Passion
July 27 – Oct. 23, 2005
Second Floor



Brett Weston: Selected Works
Aug. 3 – Nov. 6, 2005
Third Floor

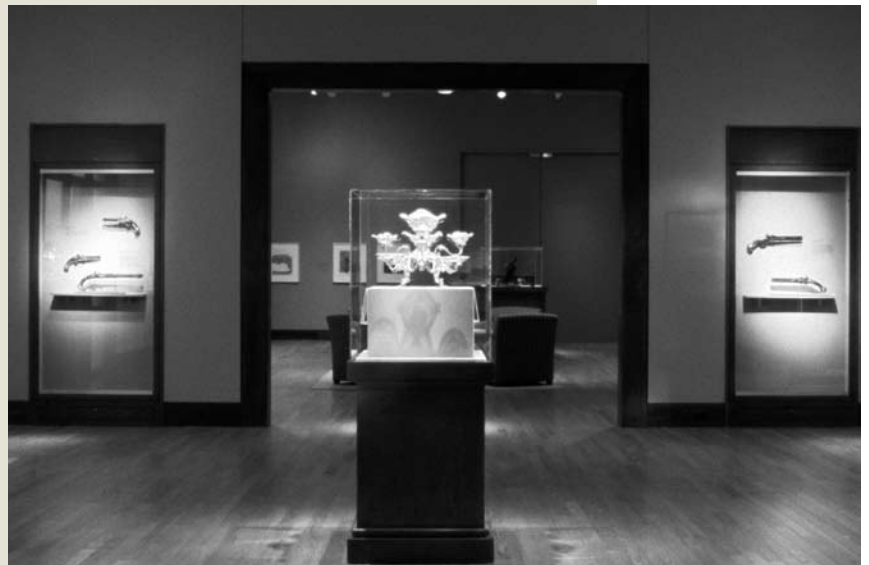
*Ben Shahn: The Rilke Portfolio,
For the Sake of a Single Verse*
Oct. 26, 2005 – Feb. 26, 2006
Second Floor





Selections from the Westheimer Family Collection
Nov. 9, 2005 – May 21, 2006
Third Floor

*Masterworks in English Silver of the Seventeenth
and Eighteenth Centuries from the James C. and
Virginia W. Meade Collection*
Dec. 21, 2005 – Sept. 24, 2006
Second Floor



*Crosswalks: Contemporary Street
Photography*
May 24 – Oct. 8, 2006
Third Floor

EXHIBITION

The Museum film program offered a record number of independent, foreign language and classic film screenings in the Noble Theater totaling 279. Many of the popular new releases were first run exclusive engagements making their Oklahoma City premieres: *Ladies in Lavender*, *Enron: The Smartest Guys in the Room*, *Mirror Mask*, *Neil Young: Heart of Gold*, *Sophie Scholl: The Final Days*, *Tristram Shandy: A Cock and Bull Story*, *Ask the Dust*, and *The Notorious Bettie Page*.

Thematic film series presented this year included: Mid-Century Matinees – classic films from the 1940s and 50s, Palestine on Film, Oklahoma Holocaust Remembrance on Film, KidsFirst Holiday Film Festival, “I Love Music” film weekend, New Jewish Cinema, Oscar® Tune-Up featuring ten of the year’s nominated films, and Movies for Mortals, a film and discussion series about issues of death and dying in the cinema.

In an effort to bring the film festival world to Oklahoma City, the Museum hosted several high profile traveling film festivals: Manhattan Short Film Festival, French films from the Clermont-Ferrand Short Film Festival, The Animation Show, and Global Lens – a touring film series promoting cross-cultural understanding through film. Sneak previews that hit the big screen this year included the Martin Scorsese PBS documentary *Bob Dylan: No Direction Home*, the new feature film *Hoot* based on the acclaimed children’s novel, and the pilot episode of the Oklahoma-produced children’s show *Yippee Yi Yo Show*.

EVENTS

Special film events kicked off in July with a wine tasting on the Museum Cafe patio followed by a screening of the film *Mondovino*. The third annual Film Preservation Festival in September opened with guest author and Lon Chaney scholar Michael F. Blake and a memorable live organ accompaniment by Wally Brown to Buster Keaton’s silent classic *The General*. In October British documentary filmmaker David Kennard presented a master class and public lecture on “Opening the Door to Creativity.” Ballet legends, Yvonne Chouteau and Miguel Terekov, appeared to talk about their careers with the film *Ballet Russes*.

The Cluster Chord String Quartet performed live in the Noble Theater before screenings of the “I Love Music” film weekend. In March the Sing-a-long *Sound of Music* came to the Noble Theater for an unforgettable weekend of costumed nuns, Von Trapp family members, and Julie Andrews look-a-likes singing their hearts out to one of most beloved musicals ever written. The Oklahoma produced feature film *The Hunt* made its world premiere at the Noble Theater with guest director Fritz Kiersch and producer Gray Fredrickson. The year was capped off by a special screening of the restored film *House Made of Dawn* with an appearance by guest author, N. Scott Momaday, in collaboration with the National Museum of the American Indian and Jacobson House Native Art Center.

COLLECTION

The Museum’s film collection continued to grow to almost 500 titles with additional donations from public and private collectors. The strengths of the collection were identified as silent cinema classics, international auteur directors, films listed in the American Film Institute Top 100, award winning short films, and educational documentaries. A new film collection management policy was approved by the Board of Directors, establishing guidelines for the research, condition reporting, storage, and use of the collection. A film collection database was designed to collect and organize information about this valuable motion picture archive.



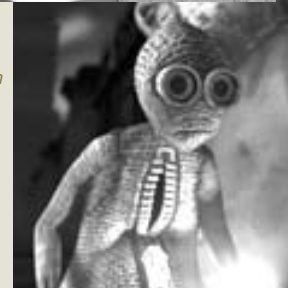
Audience participation for the Sing-a-Long *Sound of Music*.



Mary Nichols with Ballet Russes Yvonne Chouteau and Miguel Terekov.



The Animation Show



deadCENTER Film Festival director Cacky Poarch with director Fritz Kiersch, and film curator Brian Hearn.



Students enjoy a unique view of Chihuly's *Persian Ceiling*.

The Oklahoma City Museum of Art's Education Programs provided an outstanding variety of educational opportunities for the community. Docent training, workshops, adult and school tours, and Museum School classes brought together public and professional artists from the community and fulfilled the Museum's ongoing commitment to arts education.

School and Adult Tours

In 2005-2006, the Museum's volunteer docents gave 278 tours for both student and adult groups during the *Mid-Century USA: American Art & Design, 1940-1960*, *Artist as Narrator*, *Mexican Masters*, and *Tempest and Romantic Visionaries* exhibitions. The total number of students participating in school tours was 7,420 with adult tours numbering 1,875. Over forty docents participated in the training sessions for a total of over 2,300 hours.



Children listening to a docent in the *Artist As Narrator* exhibition.



Dr. Bob Blackburn visits with members who took the *Mid-Century Tour* through Oklahoma City.

Travel Program

In July 2005, a museum-sponsored travel group visited Santa Fe. The trip included a tour of the Georgia O'Keeffe Museum, various galleries, and a glorious evening at the Santa Fe Opera. A day trip, in February 2006, to Fort Worth's Kimbell Art Museum to view the *Gauguin and Impressionism* exhibition was enjoyed by over 40 participants.

Library Resource Center

The Library Resource Center continues to serve teachers with resource materials that enhance their curriculum. This past year the teacher's materials served 31 schools, reaching 6,509 students. A thirty-four volume set of the Grove Dictionary of Art, dedicated to the Museum's founding librarian, Wendy Mahsetky-Poolaw, who was killed in a car accident in January 2006, was added to the library collection and will serve as a valuable research tool for the Museum's curatorial staff.



The Library Resource Center

Museum School

The Museum School program offered 169 classes and camps for children and adults in a variety of artistic disciplines and drew a total of 1,495 people from the Oklahoma City metro, across the state, and from neighboring states. Nine hundred thirty-eight children and 557 adult students enjoyed hands-on artistic experiences. Grounded in basic visual arts media and techniques, a wide range of adult classes, such as *Introduction to Drawing and Painting*, *Beginning Oil Painting*, and the *Studio Sampler*, were popular among Museum members and non-members. Also well-attended were a number of one-time workshops, including *Digital Photography*, *Watermedia for the Serious Beginner*, *Vivid Watercolor*, and the always fun *Drip, Dribble, Squirt and Splash*. Inspired by the Museum's Chihuly collection, special glassblowing classes experienced a continued popularity. Classes for children ages 3-13, such as *Meet the Masters*, *Japanese Ink Drawing*, *Chihuly for Children*, *Hands in Clay*, and *Fantastic Photographs*, encouraged artistic expression and appreciation.



Students enjoy learning watercolor techniques.



Photography summer camp heads outdoors on the City Hall lawn.

Museum Camps

Over 280 children participated in a number of thematic camps during their school breaks this past year, including Fall Break Camps for ages 5-10, Winter and Spring Break Camps: *Las Artes de Mexico* for ages 5-10, and the *Digital Photography & More* Spring Break Camp for ages 11-13. Museum School summer camp attendance set another record this year, serving 214 children in 19 different camps for ages 5-16. These activities allowed the youngest members of our community to investigate various artistic forms and fostered the development of a new generation of art enthusiasts and Museum patrons.

Family Fun

For the *Mexican Masters* Super Saturday in January, families were treated to exciting performances by the Norahua Folkloric Dancers and the Enye Mariachi group in the Noble Theater. On the other two Super Saturdays, live dramatic presentations were offered, and all included hands-on art, door prizes, docents tours in the special exhibition, and visits by Tupper the Clown with his balloon art or the Metro Library children's story time activities.



Participating in Hands on Artmaking during Super Saturday for Families, *Mexican Masters!*

board of trustees & committees



Museum trustee Penny McCaleb with Seyan Hefner and Museum incoming president Virginia Fox.

2005-2006 BOARD OFFICERS

Leslie Hudson
President

Virginia Meade Fox
President-Elect

Duke R. Ligon
Vice President

Frank D. Hill
Vice President

David T. Greenwell
Treasurer

Teresa L. Cooper
Secretary

2005-2006 TRUSTEES

Elby J. Beal
Dave Bialis
John R. Bozalis, M.D.
William M. Cameron
Teresa L. Cooper
Peter B. Delaney
Marion DeVore
Shirley Ford
Virginia Meade Fox
David T. Greenwell
Kirk Hammons
Suzette Hatfield
Frank D. Hill
K. Blake Hoenig
Joe M. Howell, D.V.M.
Leslie Hudson
The Honorable Willa D. Johnson
John E. Kirkpatrick
Duke R. Ligon
Judy M. Love
Penny M. McCaleb
Katie McClendon
John R. "Rob" McCune
James C. Meade
Frank W. Merrick
Charles E. Nelson
Charles Nesbitt
Maurice C. Nickell, D.D.S.
Morris Permenter
John P. Porter
Christopher P. Reen
Ira H. Schlezinger
Amalia Miranda Silverstein, M.D.
Jeanne Hoffman Smith
Denise Semands Suttles
Jordan Tang, Ph.D.
Wanda Otey Westheimer

EXHIBITIONS COMMITTEE

Virginia Meade Fox, Chair
Teresa L. Cooper
Kirk Hammons
James C. Meade
Charles E. Nelson
John P. Porter
Amalia Miranda Silverstein, M.D.
Denise Semands Suttles
Wanda Otey Westheimer

PROGRAMS COMMITTEE

Kirk Hammons, Chair
Peter B. Delaney
Marion DeVore
Suzette Hatfield
Frank D. Hill
The Honorable Willa D. Johnson
Katie McClendon
Frank W. Merrick
Jeanne Hoffman Smith
Jordan Tang, Ph.D.

DEVELOPMENT/MARKETING COMMITTEE

Elby J. Beal, Chair
Dave Bialis
John R. Bozalis, M.D.
Kirk Hammons
Judy M. Love
Penny M. McCaleb
James C. Meade
Christopher P. Reen

NOMINATING COMMITTEE

Virginia Meade Fox, Chair
Elby J. Beal
K. Blake Hoenig
Joe M. Howell, D.V.M.
Penny M. McCaleb
Charles Nesbitt
John P. Porter

COLLECTIONS MANAGEMENT COMMITTEE

Charles Nesbitt, Chair
Teresa L. Cooper
Suzette Hatfield
Judge Robert H. Henry
K. Blake Hoenig
James C. Meade
Maurice C. Nickell, D.D.S.
John P. Porter
Amalia Miranda Silverstein, M.D.
Wanda Otey Westheimer

FACILITIES COMMITTEE

Frank D. Hill, Chair
William M. Cameron
Judy M. Love
Penny M. McCaleb
John R. "Rob" McCune
Charles Nesbitt

FINANCE, INVESTMENT & PERSONNEL COMMITTEE

David T. Greenwell, Finance/
Investment Chair
Ira H. Schlezinger, Personnel Chair
Peter B. Delaney
K. Blake Hoenig
Joe M. Howell, D.V.M.
Duke R. Ligon
Frank McPherson
Frank W. Merrick
Charles E. Nelson
Morris Permenter
Denise Semands Suttles
Wanda Otey Westheimer



Trustees Frank Merrick, Virginia Fox, Peter Delaney, and Denise Suttles at a board meeting.



The Oklahoma City Museum of Art staff.

ADMINISTRATION

- Carolyn Hill
Executive Director
- Susie Bauer
Executive Assistant to Board & Director
- Rodney Lee
Director of Finance/Administration
- John Calabrisi
Information Technology Administrator & Finance Assistant
- Diane Glenn
Administrative/Finance Assistant

FACILITY OPERATIONS

- Jack Madden
Facility Operations Manager
- Merle Pinkston
Assistant Facility Operations Manager
- Yvonne Sampson
Visitor Services/Security Associate
- James Cain
Audio Visual Technician & Projectionist
- LaNita Austin
Assistant Projectionist
- Brian Parker
Facility/Technical Support Associate
- Sharon Roper
Facility Support Associate

EDUCATION & PUBLIC PROGRAMS

- Doris McGranahan
Education Coordinator
- Chandra Boyd
Associate Educator/Museum School Administrator
- Wendy Mahsetky-Poolaw
Librarian

CURATORIAL

- Hardy George, Ph.D.
Chief Curator
- Alison Amick
Associate Curator
- Lindsay Hightower
Curatorial Associate
- Alison Barnett
Curatorial Assistant
- Brian Hearn
Film Curator

REGISTRATION

- Matthew Leininger
Registrar/Administrative Head, Curatorial Department
- Jim Meeks
Chief Preparator & Photographer
- Ernesto Sanchez Villarreal
Exhibit Designer/Associate Preparator
- Christina Busche
Associate Preparator

DEVELOPMENT & MARKETING

- Jim Eastep
Development Coordinator & Membership Director
- Leslie Spears
Communications Manager
- Whitney Cross
Event Coordinator
- Nicole Emmons
Editor & Development/Marketing Assistant
- Joyce Brown
Membership & Development/Marketing Assistant
- Stacy Walker
Marketing and Group Tours Advisor

VISITOR SERVICES

- Talitha Clemons
Associate
- Hollie Coen
Associate
- Sidney Moore
Associate
- Kem Onukogu
Associate

VISITOR SERVICES/GALLERY ATTENDANTS

- Ann Eggers
- Carrie Felter
- Dudley Marshall
- Andrea McMillan
- Roberta Stalcup

MUSEUM STORE

- Christen Conger
Manager
- Amy Abbott
Associate
- Kelly Cameron
Associate
- Anne Guess
Associate

MUSEUM CAFE

- Ahmad Farnia
General Manager
- Robert Black
Executive Chef

audience development & special events

July 2, 2005

Mandolino
Wine Tasting and Screening

July 12, 2005

Oklahoma Medical Research Foundation
Reception and Tour for Fleming Scholars
Sponsored by the Oklahoma Medical Research Foundation

July 18, 2005

Open House: Chesapeake Energy Corporation
Corporate Evening for Chesapeake Energy Corporation Associates
Cosponsored by Chesapeake Energy Corporation and OKCMOA

July 31, 2005

Mid-Century: Downtown OKC History and Architecture
Bus Tour led by Dr. Bob Blackburn

August 16, 2005

Oklahoma City Museum of Art Profile
Staff Presentation and Tour for OSU Museum Studies Class

August 17, 2005

Retro Vacation Slide Show Tour of USA
Presentation by Charles Phoenix

August 23, 2005

KFOR Season Kickoff
Sponsored by News Channel 4

August 25, 2005

Behind the Scenes
Tour of Museum back-of-house activities

September 7, 2005

Artist as Narrator: Nineteenth Century Narrative Art in England and France
Members' Preview and Reception

September 8 - 11, 2005

Film Preservation Festival
Guest author Michael F. Blake; Live organ accompaniment by Wally Brown; Film scholars: Dr. Mary Broadnax and Dr. John Springer
Made possible by the UCO Film Studies Collection

September 9, 2005

Renaissance Ball
30th Annual Black tie Fundraiser

September 19, 2005

Oklahoma City Museum of Art Profile
Staff Presentation and Tour for OU Museum Studies Class

September 21, 2005

Sneak Preview of *Bob Dylan: No Direction Home*
Cosponsored by Emerging Pictures, Samsung, and BobFM

September 25, 2005

Framing a Narrative: Visual Imagery and the Stories They Tell in France and England
Lecture by Gabriel Weisberg, Ph.D.

September 27, 2005

French Shorts from Clermont-Ferrand Short Film Festival. Guest, Roger Gonin, festival director
Cosponsored by University of Oklahoma Film & Video Studies Program and OKCMOA

September 29, 2005

Teacher Workshop
Presentation and Tour

October 11, 2005

Opening the Door to Creativity
Master Class and Public Lecture by David Kennard, documentary filmmaker
Cosponsored by the DaVinci Institute and OKCMOA



Kon Keesee, Dannie Bea Hightower, and Bertrand du Vignaud de Villefort at the Friends Lecture.

October 12, 2005

World Monument Fund
Lecture by Bertrand du Vignaud de Villefort
Sponsored by the Friends of the OKCMOA

October 13, 2005

Kerr Foundation Tour

October 14, 2005

Art on Tap
2nd Annual Beer-Tasting Fundraiser

October 15, 2005

Super Saturday: Artist as Narrator
Family Activities

October 17, 2005

Oklahoma City Museum of Art
Guest Address by Carolyn Hill
Sponsored by Kappa Alpha Theta

October 20-21, 2005

Fall Break Museum School Camp for Ages 5-10

October 27, 2005

Oklahoma City Museum of Art
Staff Presentation and Tour for OU Museum Studies Class

November 2, 2005

Evening in the Homes of Collectors
Hosted by Preston and Dorthlynn Gaddis

November 10, 2005

Mid-America Art Alliance Reception
Sponsored by Mid-America Art Alliance

November 16, 2005

Collecting American Art: A Personal History
Lecture by John Wilmerding, Ph.D.
Sponsored by the Friends of the OKCMOA

November 17, 2005

Buckminster Fuller: Thinking Out Loud
Cosponsored by the American Institute of Architects Central Oklahoma Chapter and the Gold Dome Multicultural Society

November 18, 2005

Dell Corporation
Museum Profile and Tour

November 19, 2005

Guest experimental filmmaker Scott Nyerges from Austin, Texas

November 25, 2005

Ballet Russes
Special Screening with Guests, Yvonne Chouteau & Miguel Terekov

November 26, 2005

Beaux Arts Ball
Annual Museum Collections Benefit
Sponsored by the Beaux Arts Committee

December 14, 2005

Mexican Masters: Rivera, Orozco, and Siqueiros, Selections from the Museo de Arte Carrillo Gil
Members' Preview and Reception

December 27 - 30, 2005

KidsFirst! Holiday Film Festival
Cosponsored by Coalition for Quality Children's Media and OKCMOA

December 28-30, 2005

Las Artes de Mexico
Winter Break Museum School Camp for Ages 5-10

December 31, 2005

New Year's Eve
Dinner in the Museum Cafe and Champagne on the Roof Terrace

January 6-7, 2006

I Love Music Film Weekend
Live musical performances by the Cluster Chord String Quartet before screenings

January 12, 2006

Educator's Evening

January 12-15, 2006

New Jewish Cinema
Cosponsored by the Oklahoma City Jewish Foundation

January 20, 2006

Charter 35 Luncheon

January 21, 2006

!fiEGGsta!
Omelette Party 2006 Fundraiser

January 23, 2006

Mexican Masters in the Carrillo Gil Collection
Lecture by Armando Sáenz Carrillo

January 26-29, 2006

Downtown Mariachi Festival
Week-long Festival Celebrating Hispanic Culture
Partnership Activities with the Ronald J. Norick Downtown Library, Oklahoma City Philharmonic, Junior League of Oklahoma City, and the Latino Community Development Agency

January 28, 2006
Super Saturday: Mexican Masters
Family Activities

February 2, 2006
Gauguin and Impressionism
Day Trip to Kimbell Museum, Ft. Worth

February 13, 2006
Oklahoma Art League
Presentation and Tour

February 15, 2006
Paul Cézanne: Life and Works
Lecture by Phillip Conisbee, Ph.D.
Sponsored by the Friends of the OKCMOA

February 17, 2006
Art with a Heart
Art Show, Tours, and Reception
Cosponsored by Tri-Delta and OKCMOA



Moms' Night Out at the Museum

February 24, 2006
Romántico
Educational screening for Hennessey H.S.

March 2, 2006
Monet to de Kooning: Selections from the Davis Museum and Cultural Center at Wellesley College
Members' Preview and Reception

March 3-5, 2006
The Sound of Music Sing-A-Long

March 4, 2006
Oklahoma Arts Institute Poetry Auditions

March 9, 2006
Quality of Life Panel Discussion
Presented by Leadership OKC

March 14-17, 2006
Las Artes de Mexico and Digital Photography & More
Spring Break Camps for Ages 5-10 and Ages 11-13

March 15, 2006
Hornets 101: The Art of Basketball
Cosponsored by OKC/New Orleans Hornets and OKCMOA

March 16-26, 2006
Global Lens
Touring Film Series

March 21, 2006
Educational screening of short films for Westminster School Fifth Grade

March 22, 2006
The Oklahoman Editors
Presentation and Tour

March 23, 2006
OKC Chamber of Commerce
Reception
Cosponsored by OKC Chamber of Commerce and OKCMOA

March 24, 2006
Max and Mona
Educational Screening for Cushing H.S.

March 28, 2006
Downtown Rotary
Luncheon and Tour
Cosponsored by Downtown Rotary and OKCMOA

April 13, 2006
The Hunt
World premiere screening with guest director Fritz Kiersch and producer Gray Fredrickson

April 19, 2006
Reflections of Hope
Reception
Sponsored by OKC National Memorial

April 19, 2006
Southwest Foundations Association Conference
Reception, Tours, and Dinner
Sponsored by the Southwestern Foundation

April 19, 2006
Oklahoma City Museum of Art: Management Profile
Presentation and Tour for OSU Management Classes

April 20, 2006
Tempests and Romantic Visionaries: Images of Storms in European and American Art
Members' Preview and Reception



In the Homes of Collectors at the Silversteins.

April 20, 2006
Educator's Evening

April 26, 2006
Evenings in the Homes of Collectors
Hosted by Drs. Paul and Amalia Silverstein
Sponsored by the Friends of the OKCMOA

April 29, 2006
Hoot
Sneak preview screening
Co-presented by the Oklahoma Department of Libraries and OKCMOA

May 3, 2006
Donor Reception
Hosted by OKCMOA Board of Trustees

May 5, 2006
House Made of Dawn
Special Screening with guest author N. Scott Momaday
Co-presented by the National Museum of the American Indian and Jacobson House Native Art Center

May 6, 2006
Super Saturday: Tempests and Romantic Visionaries
Family Activities



Hornets player PJ Brown visits with fans at the Art of Basketball: 101 at the Museum.

May 15, 2006
Annual Docent Luncheon

May 17, 2006
Caleb Bingham to Thomas Hart Benton: The Midwest as Muse
Lecture by Randall Griffey, Ph.D.
Sponsored by the Friends of the OKCMOA

May 18, 2006
Moms' Night Out
Open House and Activities

May 18-21, 2006
Movies for Mortals Film and Discussion Series
Moderated by Marianne Matzo, Ph.D., Palliative Care Nursing, University of Oklahoma College of Nursing

May 24, 2006
Oklahoma City Museum of Art Profile
Staff Presentation and Tour for OSU Museum Studies Class

May 25, 2006
Crosswalks: Contemporary Street Photography
Members' Preview and Reception

June 5, 2006
Beaux Arts Brunch
Honoring the 2006 Debutantes and Mothers

June 7, 2006
Sightings of "Turneresque" Storms
Lecture by Hardy George, Ph.D.

June 8-11, 2006
6th Annual deadCENTER Film Festival
Opening Night Reception and Screening
Guest Directors: James Scurlock, Fritz Kiersch, Layton Blalock, and Jeff Kent

June 13-August 11, 2006
Summer Museum School Camps for Ages 5-16

June 21, 2006
Annual Members' Meeting and Reception

June 30, 2006
Hornets Season Wrap up
Sponsored by OKC/New Orleans Hornets

Museum Support Given in Many Forms

Through the generosity of members and donors, the Oklahoma City Museum of Art is able to fulfill its mission and role as a civic partner. We offer people of all ages, including future generations, access to our nation's cultural heritage. The Oklahoma City Museum of Art has a special role in public education, centered on the capacity to provide our community an interactive place to better understand our community, our nation, and our world.



Members and visitors arrive for *Mexican Masters*.

Thank you, Members!

The Oklahoma City Museum of Art would like to thank its members for another exceptional year! As a vital means of support, membership income increased over 12% from last year. With over 4,000 household members, the Museum offers its members free, unlimited admission, a bimonthly newsletter, exhibition previews, Super Saturday activities, and discounts on merchandise and programs.

The Inasmuch Foundation

Chesapeake Energy Corporation

GlobalHealth, Inc.

Kirkpatrick Family

MidFirst Bank

Bowers Foundation

Cox Communications

Devon Energy Corporation

Kerr-McGee Corporation

Sarkeys Foundation and Sonic, America's Drive-in

Education Endowments

Thatcher Hoffman Smith Film Endowment

Season Sponsors, Vital Partners

The Oklahoma City Museum of Art is a privately supported, cultural institution. As such, the Museum's Season Sponsorship Program is an important component of our annual funding. Season Sponsorships support programming for the entire season - September 1st through August 31st annually. Season Sponsorships allow the Museum to provide the community with quality exhibitions and programs. Many thanks to our season sponsors for the 2005-06 season.

Endowments and Funds for Operations and Programs

The Oklahoma City Museum of Art is honored to hold twelve named endowments and funds, which provide invaluable support annually and ensure operations and programs are sustained in perpetuity. Endowments and funds as of June 30, 2006, are, as follows:

Beaux Arts Acquisition Fund

Donald W. Reynolds Visual Arts Center Building Maintenance Endowment

Fee-Milligan Endowment Fund

James C. and Virginia W. Meade Designated Fund for Art Acquisitions

Oklahoma City Museum of Art Acquisitions Fund

Oklahoma City Museum of Art Affiliated Endowment Fund

Oklahoma City Museum of Art Endowment

Raymond A. and Verna N. Young Endowment

Robert and Harriette Orbach Endowment Fund

Sarkeys Foundation Arts Education Endowment

Sonic, America's Drive-in Arts Education Endowment

The Thatcher Hoffman Smith Film Endowment



Joe and Vestina Ruffin, Renate and Chuck Wiggin, and Willard Johnson enjoy the Roof Terrace.

Program Sponsorships

The Museum received major funding designated for exhibitions and programs during the last fiscal year. Our deepest gratitude is extended to:

Ad Astra Foundation
 El Nacional
 Kirkpatrick Foundation
 The Kirkpatrick Family Fund
 Mr. and Mrs. James C. Meade
 Newschannel 4
 Oklahoma Arts Council
 Oklahoma Humanities Council
 Porch School Supply

Additionally, the Museum's Film Program continued to flourish with sustained support from the Thatcher Hoffman Smith Film Endowment as well as support from Raina and Stan Pelofsky, Jewish Foundation of Oklahoma City, Gene and Jeannine Rainbolt, Jeanne Hoffman Smith, Bob and Nancy Anthony Family Affiliated Fund, Drs. Mike and Carolyn Goodrich, Julie and Kirk Hall, Jennie Curtis, Gary M. Moore, M.D., Loretta Webber, Rachel Webber, and Mr. and Mrs. Richard Wymer.

Allied Arts Foundation

As an Allied Arts member agency, the Museum receives important operating funds from the annual Allied Arts Campaign. The Allied Arts Fund Drive is an annual effort to secure vital operating support from twenty arts agencies in central Oklahoma.

Yellow Bus Brigade

In response to arts education budget cuts in the public schools, the Museum implemented a program titled the *Yellow Bus Brigade*. This program offers scholarships to schools for bussing and admission costs. Since inception in 2004 the *Yellow Bus Brigade* has received Corporate, Foundation, and Individual support in excess of \$60,000 and has brought over 10,000 students to the Museum for tours of special exhibitions and the Museum's permanent collection. For many of these students it was their first time to visit an art museum.



Students from Capitol Hill Elementary.

Beaux Arts 2005-06

The Beaux Arts Acquisition Fund is the beneficiary of funds raised by the Oklahoma City's annual Beaux Arts Ball. The Fund has been responsible for many acquisitions to the Museum's permanent collection, including the purchase of the *Dale Chihuly: The Exhibition*. This year, in addition to the Committee's gift of \$40,000, the 2005 King, Gene Rainbolt, generously contributed \$10,000, bringing the total to \$50,000 for Museum acquisitions.



The Beaux Arts debutantes gather before the luncheon held at the Museum.

In-Kind Contributions important to fulfillment of mission

During the fiscal year 2005-06, the Museum was very fortunate and very grateful for in-kind contributions in excess of \$860,000. Donations included works of art for the permanent collection, art supplies, books and videos, marketing and donations to the Museum's fundraisers. In-Kind contributors included:

Patricia J. Aaron	Deborah K. Langston
Dr. and Mrs. Geoffrey P. Altshuler	Harolyn Long
Ms. Carla Anglada	James McDaniel
Keith Ball	Mr. and Mrs. James C. Meade
James Berkey	Suzanne W. Mears
Bill Veazey's - The Party Store	Raymond N. Merritt
Beverly Birkle	Mary Ann Moore
Rebecca Collins	Dorothy Norris Moses
Kjelshus Collins	Regina Murphy
Cox Communications, Inc.	Mary Nickell
Custom Floor Design	Suzanne Peck
Bryan Dahlvang	David Phelps
Janie Deupree	Lillian Quintana de Anglada
John Fincher	Suzanne Randall
Garden Artisans	Collin D. Rosebrook
Diane Glenn	Ernesto Sanchez
Ann Guess	Bert Seabourn
Kyle Golding	Paul Snyder
Celia S. Haddad	Robin Orbach Starke
Mr. and Mrs. W. John Hefner, Jr.	Michi K. Susan
Dennis R. Johnson	B.J. White
Laurel B. Kallenberger	Neta Wilson
Jim Keffer	John Wolfe

Fundraisers benefit Museum Operations



Johnson and Millie Hightower with Renaissance Ball chairs Amalia and Paul Silverstein.

Renaissance Ball

Chaired by Drs. Amalia and Paul Silverstein, the thirtieth annual Renaissance Ball honored Honorary Chairs James C. and Virginia W. Meade, long-time supporters and members of the Museum. The Nandas hosted a beautiful Patron Party in their home, and the Shakespearian-themed ball, influenced by John Anster Fitzgerald's *Titania and Bottom: A Scene from A Midsummer Night's Dream* from the *Artist as Narrator* exhibition, followed at the Oklahoma City Golf and Country Club. With over 420 in attendance, the Ball raised more than \$200,000 for Museum operations and programs.

Art on Tap

The Museum's second annual Art on Tap experienced great success. Held in the Museum's main lobby, this special beer tasting event featured more than thirty domestic and import beers as well as hors d'oeuvres from local restaurants, such as Old Germany Restaurant, the Museum Cafe, Adobe Grill, Pepperoni Grill, Rococo Restaurant, Sophabella's Chicago Grill, and Tom and Jerry's Steak & Fish Grille. The event served over 400 guests and raised over \$20,000 for Museum exhibitions.



Art on Tap crowds enjoy the beer tasting event!



Virginia Fox with Kim, Suzette, and Kate Hatfield.

Omelette Party

The twenty-second annual Omelette Party, *¡fiEGGsta!*, was presented by the Omelette Party Committee and chaired by Susan Phillips. Held at the Coca-Cola Bricktown Events Center, the party hosted nearly 850 guests, who dined on gourmet omelettes, presented by 17 area chefs; participated in an art raffle of more than 50 works by local artists; and enjoyed an early performance by the Mariachi Orgullo de America band, followed by dancing to the music of Dave and the Wavetones. Proceeds from the party totaled over \$38,000 and benefited Museum exhibitions.

2005-06 Beaux Arts Committee

- Mrs. Hank Bradley
- Mrs. Cliff Branam
- Mrs. Jay Crabb
- Mrs. Stan Cunningham
- Mrs. David Denner
- Miss Tricia Everest
- Mrs. Dan Foltz
- Mrs. Greg Frogge
- Mrs. Peter Hoffman
- Mrs. Ron James
- Ms. Claire E. Kennedy
- Mrs. Austin Kirkpatrick
- Ms. Tricia Law
- Mrs. Bruce MacKellar
- Mrs. Mike McPherson
- Mrs. Mark Pierce
- Mrs. Matt Price
- Mrs. Jay Quillian
- Mrs. David Reynolds
- Mrs. Rick Russell
- Mrs. Andy Sullivan
- Mrs. Bill Wallace



Beaux Arts past chair Susan McPherson (left), with current chair Barbara Quillen, and incoming chair Elaine Frogge.



Huda Musa, Cathy Lawrence, Carey Sue Vega and Karen Cuellar.

Omelette Party Committee

- | | | |
|-----------------|------------------------|---------------------|
| John Adams | Polly Fleet | Jody McAnally |
| Kaye Adams | Stacey Ford-Gardner | Huda Mussa |
| Donna Alexander | Jim Fox | Alyce Page |
| Charlie Amis | Virginia Meade Fox | Ron Page |
| Teri Beals | Frank Gartin | Robin Richardson |
| Tony Beals | Joan Gilmore | Randy Riddell |
| Thomas Beights | Diane Glenn | Sharon Rippetoe |
| Nicole Black | Caroline Hendee | Marjie Shadid |
| Allen Brown | Durward Hendee | Joe Shannonhouse |
| Chris Carney | Sally Holmes | Tracey Shannonhouse |
| Karen Cuellar | Kathy Johnston | Steve Stone |
| Caroline Farris | Cathy Lawrence | Carey Sue Vega |
| Les Farris | Jacque Lippel | Fletcher Williams |
| Erin Fitzgerald | Rebecca Lowber-Collins | Vicki Williams |
| David Fleet | John Mackechnie | |



Bert and Terri Cooper, John and Penny McCaleb, Amalia and Paul Silverstein.

Docents

- | | | |
|-------------------|-----------------------|-------------------|
| Betty Abowitz | Judith Goodno | Alyssa Page |
| Jane Alexander | Arlene M. Halley | Pat Palmer |
| Margaret Biggs | Dorothy Hamill | Donita Phillips |
| Gale Bollinger | Lin Hartgrove-Sanchez | Deborah Robertson |
| Peter Bradford | Bette Jo Hill | Richard Rouillard |
| Stephanie Burdine | Karen Ingram | Silvia Small |
| Georgia Chandler | Jeanne Jackson | Ginger Spear |
| Corina Daniel | Darby Johnsen | Bobbi Stas |
| Dorothy A. Davis | Ardeth Jones | Gail Stricklin |
| Karen Delaney | Lois Joseph | Nancy Van Horn |
| Donna Edwards | Dena Keele | Cheri Weintraub |
| Susan Foster | Danese Knott-Craig | Cheri Wheeler |
| Sue Francis | Clara Lafferty | Jo Wheeler |
| Norma Gallagher | Anne Michalski | Lillian Yoeckel |

Renaissance Ball Committee

- | | |
|---------------------|---------------------------|
| Jerriann Altshuler | Lori Hill |
| Anita Clark Ashley | Ann Hoover |
| Gene Barth | Leslie Hudson |
| DeDe Benham | Laurie Hyde |
| Annie Bohanon | Judy Love |
| Sharon Bozalis | Karen Mayfield |
| Barbara Brou | Penny & John McCaleb |
| Terri Cooper | Sandy Meyers |
| Candy & Tom Dulaney | Polly Nichols |
| Nancy Ellis | Leslie Rainbolt-Forbes |
| Stacey Ford-Gardner | Linda & Bill Rodgers |
| Virginia Fox | Amalia & Paul Silverstein |
| Joan Gilmore | Karen Swyden |
| Mary Ellen Gumerson | Jim Vallion |
| Kirk Hammons | Genea Vallion |
| Mary Ann Haskins | |
| Seyan & John Hefner | |
| Bette Jo Hill | |



Docents led more than 5,000 students through exhibitions this year.

As a privately funded nonprofit institution, the Oklahoma City Museum of Art must rely on the generosity of its friends and supporters to meet the enormous cost of providing programs and services, year-round, to thousands of local, national, and international visitors. There are many ways for you to contribute and many benefits in store when you choose to do so. We welcome your involvement through memberships, program and fundraiser sponsorships, annual fund giving, and through our planned giving program. Our deepest appreciation to the many 2005-06 donors whose generous support has been invaluable.

DONOR CIRCLES

Chairman's Circle

Ad Astra Foundation
 Allied Arts
 American Fidelity Group
 Anonymous
 Beaux Arts Society
 Chesapeake Energy Corporation
 Devon Energy Corp.
 Dr. and Mrs. Robert S. Ellis
 GlobalHealth, Inc.
 Mr. and Mrs. S. Kim Hatfield
 Mr. and Mrs. J. Clifford Hudson
 Inasmuch Foundation
 Kerr-McGee Corporation
 Kirkpatrick Family Fund
 Kirkpatrick Foundation, Inc.
 Ms. Joan Kirkpatrick
 Love's Travel Stops
 Mr. and Mrs. Aubrey K. McClendon
 Mr. and Mrs. James C. Meade
 MidFirst Bank
 Mr. Charles and Reverend Margôt Nesbitt
 OG&E
 Oklahoma Arts Council
 Oklahoma Centennial Commission
 Oklahoma Humanities Council
 Porter-Watchorn Foundation, Inc.
 Mr. and Mrs. Ron Suttles
 The Burbridge Foundation
 The Kerr Foundation, Inc.
 The Robert S. and Eloise C. Bowers Foundation

Collector's Circle

Ms. Ann Simmons Alspaugh
 BancFirst
 Mr. and Mrs. Elby Beal
 Mr. and Mrs. Clayton I. Bennett
 Mr. and Mrs. Peter Delaney
 Mr. and Mrs. Frank D. Hill
 Integris Health
 Mr. and Mrs. Duke R. Ligon
 Mr. John R. McCune
 Mr. and Mrs. Frank A. McPherson
 OCT Equipment
 Mr. and Mrs. William C. Payne
 Dr. and Mrs. Stan Pelofsky

Puritan Oil & Gas Corp.
 Mr. and Mrs. George Records
 Mr. and Mrs. Ira H. Schlezinger
 Mr. and Mrs. R. L. Sias
 The Hankins Foundation

Director's Circle

Bank of America
 Dr. and Mrs. John R. Bozalis
 C. L. Frates and Company
 Mr. Scot A. Conner and Dr. Katherine Little
 Coppermark Bank
 Ethics and Excellence in Journal Foundation
 Mr. and Mrs. James H. Everest
 Gardner Tanenbaum Group LLC
 Mr. and Mrs. David T. Greenwell
 Mr. and Mrs. W. John Hefner, Jr.
 Mr. and Mrs. K. Blake Hoening
 Dr. and Mrs. John H. Holliman
 Dr. and Mrs. Joe M. Howell
 Mr. and Mrs. Jan Jankowsky
 Mr. Christian K. Keesee
 Mr. John E. Kirkpatrick
 Mr. and Mrs. John A. McCaleb
 Mr. and Mrs. Charles E. Nelson
 Mr. and Mrs. J. Larry Nichols
 Mr. and Mrs. J. Phillip Patterson Schlumberger
 Drs. Paul and Amalia Silverstein
 Ms. Jeanne Hoffman-Smith
 St. Anthony Hospital Foundation
 Mrs. Charles E. Stewart
 UMB Oklahoma Bank
 W & W Steel Company

Sustainer's Circle

Mr. and Mrs. Patrick B. Alexander
 Dr. and Mrs. Geoffrey P. Altshuler
 Bank of America Private Banking
 Mr. and Mrs. J. Edward Barth
 Mr. and Mrs. Bob Benham
 Mr. and Mrs. G. T. Blankenship
 Ms. Mary C. Blanton
 Bob Moore Cadillac
 Ms. Betty Bradley and Dr. Edward Huycke
 Priscilla and Jordan C. Braun
 Mr. Allen Brown

Mr. and Mrs. Barney U. Brown, Jr.
 Mrs. C. B. Cameron
 Capitol Abstract & Title Company
 Ms. Joanna M. Champlin and Mr. Shawnee Brittan
 Chase Bank, N.A.
 Mr. and Mrs. J. William Conger
 Cox Communications, Inc.
 Mr. and Mrs. Paul A. Cox
 Dr. and Mrs. John DeVore
 Mr. and Mrs. Steve Dixon
 Donation Boxes
 Ms. Lettie Branan Douglass
 Mr. and Mrs. Ramsey Drake
 Mr. and Mrs. Paul Dudman
 Mr. and Mrs. L. T. Dulaney, Jr.
 Mr. and Mrs. Bob Duncan
 Mr. and Mrs. Andrew J. Evans II
 Dr. and Mrs. Joseph Ferretti
 First Fidelity Bank
 First Mortgage Company LLC
 Flintco, Inc.
 Dr. Leslie Rainbolt-Forbes and Mr. Scott Forbes
 Mr. Jeremy Gardner and Mrs. Stacey Ford-Gardner
 Mrs. Virginia Meade Fox
 Mr. and Mrs. John M. Fudge
 Mr. and Mrs. John Funk
 Mr. and Mrs. Gerald N. Furseth
 Mr. and Mrs. Preston G. Gaddis II
 Mr. and Mrs. Richard L. Gaugler
 Drs. Carolyn and Mike Goodrich
 Mrs. Robert D. Gordon, Jr.
 Mr. and Mrs. David F. Griffin
 Mr. and Mrs. William D. Gumerson, Jr.
 Mr. and Mrs. Kirkland Hall
 Mr. and Mrs. Royce Hammons
 Dr. and Mrs. James W. Hampton
 Mrs. Jane B. Harlow
 Dr. and Mrs. A. Dodge Hill, Jr.
 Ms. Carolyn Hill
 Mr. Thomas J. Hill
 Mr. and Mrs. E. Peter Hoffman, Jr.
 Interlink Diagnostics
 Mr. and Mrs. Edward C. Joullian III
 Ms. Chris LaFrance

Mr. William P. Leighton
 Mr. and Mrs. Gregory M. Love
 Dr. and Mrs. Tim Love
 Laird and Nancy Macdonald
 Ms. Lynn B. Mares
 Mr. Daniel Markoff
 Mr. and Mrs. Richard S. McLain
 Dr. and Mrs. Mark H. Mellow
 Mrs. Dorothy B. Melton
 Mr. and Mrs. Stewart E. Meyers, Jr.
 Morris & Libby Singer Foundation, Inc.
 Dr. and Mrs. Phillip Mosca
 Mr. and Mrs. Robert Z. Naifeh
 Mr. and Mrs. John W. Nichols
 Dr. and Mrs. Maurice C. Nickell
 Norick Investment Company
 Oklahoma Art League
 Oklahoma Egg Council
 Mr. Charles L. Oppenheim
 Ms. Lynne Ozinga
 Dr. and Mrs. Marvin D. Peyton
 Presbyterian Health Foundation
 Mr. and Mrs. Christopher Reen
 Tim and Tina Ridley
 Dr. and Mrs. Gary G. Roberts
 Ms. Nancy Robertson
 Mr. and Mrs. Patrick T. Rooney
 Dr. and Mrs. Joseph B. Ruffin
 Mr. and Mrs. Mark E. Ruffin
 Mr. Bob J. Rutledge
 Mr. and Mrs. David Singer
 Mr. and Mrs. Darryl G. Smette
 Mrs. Judith Steelman
 Mr. and Mrs. Bill Swisher, Jr.
 T.A.W., Inc.
 Mr. and Mrs. Clayton C. Taylor
 The Oklahoman
 Mr. and Mrs. Charles Tilghman
 Ms. Carol W. Trembley
 Mr. and Mrs. Blake Vernon
 Mr. and Mrs. Charles E. Wiggin
 Mrs. Martha V. Williams
 Mr. and Mrs. Dick Workman
 Ms. Lillian Yoeckel
 Dr. and Mrs. LeRoy E. Young

Patrons

Mr. and Mrs. Henry Aaron
Mr. and Mrs. Murray E. Abowitz
Dr. Gillian Air
Dr. and Mrs. Petar Alaupovic
Mr. Robert Allee
Allen Brown Architects
Mr. and Mrs. Robert D. Allen
Dr. and Mrs. Russell F. Allen
Alison Amick
Anonymous
Art Renaissance Club
Arvest Bank
Mr. and Mrs. John W. Ashcraft
Mr. and Mrs. J. David Baird
Mrs. Karan K. Baker
Ms. Mary Z. Baker
Bank of Oklahoma
Mr. and Mrs. David W. Bardwell, Jr.
Ms. Verdun Barnard
Mr. and Mrs. Robert Barnes
Ms. Alison D. Barnett
Mr. and Mrs. Cody Barnett
Ms. Susie Bauer
Ms. Martha C. Baxter
Drs. Robert and Joy Beckerley
Mr. Lewis W. Beckett
Dr. Karen Beckman
Ben E. Keith Foods of Oklahoma
Mr. Howard K. Berry, Jr.
Mr. Nick Berry
Dr. and Mrs. John T. Biggs
Mr. and Mrs. Bob Blackburn
Dr. and Mrs. Carl R. Bogardus
Mr. and Mrs. Lee Bollinger
Mrs. Charles P. Bondurant
Mr. Drew Bowers
Mrs. Patricia Bowers Edwards
Mrs. J. Philip Boyle
Mrs. Nell Hathorn Bozalis
Mrs. Terry L. Bradley
Mr. and Mrs. Ronald E. Bradshaw
Ms. Sara Branscum
Dr. W. Robert Brazelton
Bronco Drilling
Ms. Carole S. Broughton
Dr. and Mrs. David Brown
Ms. Joyce A. Brown
Ms. Patricia A. Brown
Mrs. Sarah B. Butkin
Mr. Horace K. Calvert
Ms. Chris A. Carney
Mr. and Mrs. David N. Carter
Mr. and Mrs. Randy Cassimus
Center for Nonprofits
Mr. and Mrs. David A. Cheek
Cher Bumps & Associates
Mr. and Mrs. Jim C. Clark
Cleary Foundation Ltd
Mr. and Mrs. William B. Cleary
Mr. and Mrs. Richard H. Clements

Mr. and Mrs. John Coates
Mr. E. G. Colton, Jr.
Mr. and Mrs. William Comstock
Mr. Thomas Coniglione
Mrs. Richard Conkling
Mr. and Mrs. Bill Cook
Ms. Veda R. Cook
Mr. and Mrs. Bert Cooper
Dr. and Mrs. Ken Copeland
Drs. Tim and Harriet Coussons
Ms. Virginia H. Craig
Dr. and Mrs. Ralph Cramer
Crescent Market
Mr. and Mrs. Michael P. Cross
Crowe & Dunlevy Foundation, Inc.
Mrs. Jean Ann Crum



4H students from Yukon help the Museum plant the Roof Terrace.

Mr. Bob Curtis
Ms. Jennie M. Curtis
Mr. Keith E. Curtis
Ms. Martha A. Custer
Mr. and Mrs. Jack D. Dahlgren
Dr. and Mrs. W. Edward Dalton
Mr. T. J. d'Andriole
Mr. and Mrs. Charles Davis
Mr. and Mrs. Porter Davis
Mr. and Mrs. Richard C. Davis
Mr. W. Alan Davis
Mr. and Mrs. Denver N. Davison
Dr. and Mrs. Charles E. Delhotal
Mr. Frank Dennis
Mr. and Mrs. Gary W. Derrick
Mrs. Marion DeVore
Ms. Carole J. Drake
Eales Electronics Corp.
Mr. Jim D. Eastep
Mrs. John H. Edwards
Mrs. Patricia Edwards
Mr. and Mrs. William T. Egolf
Mr. and Mrs. Stephan M. Eisner
Mr. and Mrs. Theodore M. Elam
Mr. and Mrs. John B. Elder
Ms. Gina Ellis
Ms. Julie Ellis

Mr. and Mrs. James L. Elston
Mrs. Nicole E. Emmons
Mr. and Mrs. Robert Y. Empie
England Refrigeration Service, Inc.
Mr. and Mrs. Ralph Espach, Jr.
Mr. and Mrs. C. Randolph Everest
Mrs. Jean I. Everest
Dr. Mark Allen Everett
Express Personnel Services
Mary C. Fieber
First Commercial Bank
Mr. and Mrs. Steve Fishkin
Mr. and Mrs. David Fleet
Mr. Wayne Ray and
Ms. Karla Ford-Ray
Mr. and Mrs. John Francis

Mrs. Clifford L. Frates
Mr. Kent F. Frates
Mrs. Ed Fretwell, Jr.
Mrs. G. M. Fuller
Mr. and Mrs. Gary F. Fuller
Ms. Patricia A. Gallagher and Mr.
Douglas L. Parr
Garrett & Company
Mr. Jerry A. Gilbert
Ms. Joan Gilmore
Ms. Diane Glenn and Mr. Jerry Stickle
Dr. Kay and Mr. Harry Goebel
Mr. and Mrs. Tom Gray
Mr. and Mrs. Robert Greenberg
Ms. Dina Hammam
Mrs. Patsy Hardy
Ms. Patricia A. Harper
Mrs. Helene Harpman
Mrs. Judy Harris
Mr. and Mrs. Robert Harris
Dr. and Mrs. Don W. Haskins
Mr. Andy Haswell and
Dr. Barbara Bonner
Mr. Jerry S. Hayes
Hazel Rose Foundation
Mr. and Mrs. James R. Hazelwood
Ms. Rhonda L. Heafy

Mr. and Mrs. Durward V. Hendee
Ms. Jane B. Hendrix
Mr. and Mrs. Jay Henry
Dr. and Mrs. Jacques Herzog
Mrs. Frank J. Hightower
Ms. Lindsay Hightower
Mr. and Mrs. Dan Hogan III
Mr. and Ms. Randy Hogan
Mr. and Mrs. Arthur F. Hoge
Mr. and Mrs. William J. Holloway, Jr.
Mr. and Mrs. James Holman
Mr. Jerome A. Holmes
Holmes Riddell Office Concepts
Dr. and Mrs. J. William Hood
Mr. and Mrs. Grant L. Humphreys
Mr. and Mrs. Charles L. Hunnicutt
Mr. and Mrs. David Hunt
Mr. and Mrs. Stanley Hupfeld
Mr. and Mrs. J. Dudley Hyde
Mr. and Mrs. James A. Hyde
Mr. and Mrs. John Kerr Hyde
J & B Graphics, Inc.
James B Robertson PC
Mr. and Mrs. George W. James
Jewish Federation of
Greater Oklahoma City
Mr. Berry M. Johnson
Carrie B. Johnson
Mr. Willard Johnson
Ms. A.J. Jones
Mr. and Mrs. Dan Jones
Mr. and Mrs. Bill Joseph
Journal Record Publishing Company
Journey House Travel
Mrs. Paul Kaldahl
Mr. Don A. Karchmer
Mr. and Mrs. Don Kaspereit
Keas Stainless Steel
Fabricators, Inc
Mr. Konrad Keesee
Dr. and Mrs. J. Michael Kelly
Mr. and Mrs. John Kenney
Mr. and Mrs. Aubrey M. Kerr, Jr.
Mr. and Mrs. Richard P. Kerrick
Mr. and Mrs. Mac Kilpatrick
Mr. and Mrs. James B. Kite, Jr.
Mr. James B. Kite
Mr. and Mrs. Van H. Lafferty
Mr. Michael Laird
Ms. Linda Lambert
Mr. and Mrs. Richard E. Lampton
Mr. and Mrs. Keith Leafdale
Mr. E R. Ledbetter, Jr.
Mr. and Mrs. Rodney Lee
Mr. Vincent Leitch
Dr. Elinor Lottinville and
Dr. R. Vernon Enlow
Mr. Greg Mack
Mr. John MacKechnie
Mr. and Mrs. John J. Madden, Jr.
Mrs. Shirley Mankin

donor recognition cont.

Dr. Jane Marcellus
Mr. and Mrs. Steve Mason
Ms. Tracy E. Matthews
Mr. Bervis B. McBride, Jr.
Mr. and Mrs. Tom McDaniel
Mr. and Mrs. Jim McGoodwin
Mr. and Mrs. Larry McGranahan
Mr. and Mrs. David McLaughlin
Mrs. Peggy McMillen
Mr. and Mrs. John P. McMillin
Mr. and Mrs. K. T. Meade, Jr.
Mr. and Mrs. John M. Mee
Mr. Frank W. Merrick
Mr. and Mrs. Harry Merson
Dr. and Mrs. Earl W. Miller
Dr. Sylvia Mir
Ms. JoBeth Moad
Sally and Randall Mock
Dr. Carol T. Monger
Dr. Gary M. Moore
Mr. and Mrs. Mack J. Morgan III
Mr. John Myles and Ms. Erin Van Laanen
National Radio Rentals & Sales
Mr. and Mrs. Robert D. Nelon
Dr. Donna J. Nelson
Nemecek Interior Construction Company
Ms. Sharon F. Neuwald
Mr. and Mrs. James H. Norick
Ogle & Welch PC
Oklahoma Electrical Supply Company
Mr. Joe R. Oldham
Mr. E. A. O'Rear
Mr. and Mrs. Ronald R. Page
Mr. and Mrs. Richard M. Parker
Ms. Pamela R. Parrish
Mr. Richard Parry
Mr. and Mrs. Steven Payne
Drs. Larry and Nancy Pennington
Mr. and Mrs. Morris Permenter
Mrs. Donita Phillips
Phillips McFall McCaffrey McVay & Murrah
Ms. Susan Phillips
Ms. Barbara Pirrong
Mr. and Mrs. John L. Powell
Mr. and Mrs. Nicholas Preftakes
Dr. and Mrs. Donald Preuss
Mr. Mark H. Price
Ms. Bernadette Prichard
Lewis A. Prickett
Questar Exploration and Production Co.
Mr. and Mrs. Roger Quinn
Mr. and Mrs. Gene Rainbolt
Dr. Laura I. Rankin
Mr. and Mrs. Steve Raybourn
Mr. Scott Richardson
Mr. Tom Roach
Mr. and Mrs. William J. Robinson
Mrs. Betty Rodgers-Johnson

Mrs. Regina M. Ruff
Mr. and Mrs. Lance Ruffel
Safety & Security Services, Inc
Drs. Lois and John Salmeron
Mr. and Mrs. Gary Sander
Schuman Publishing Company
Scott Sabolich Prosthetics & Research Center
Ms. Wanda V. Sellers
Mr. and Mrs. George Seminoff
Dr. and Mrs. Ralph Shadid
Mr. and Mrs. Joseph G. Shannonhouse
Ms. Ann Shaw
Mr. and Mrs. William F. Shdeed
Drs. Roger and Carol Sheldon
Mr. and Mrs. Dougal C. Sheppard
Ms. Barbara A. Shrago
Mr. and Mrs. Leonard Slater
Mr. and Mrs. Robert E. Slater
Mr. and Mrs. Marvin Small
Mr. and Mrs. Roy Smith
Mrs. Roberta Stalcup
Mr. and Mrs. Thomas E. Stewart
Stillwater National Bank
Dr. and Mrs. Daniel R. Stough
Mr. Michael Stuart and Mr. Bruce Hall
Ms. Carole A. Sullivan
Dr. and Mrs. Jordan Tang
Dr. Martha M. Tarpay
Mrs. Cheryl J. Degner
The Fred & Mary Eddy Jones Foundation
The McConnell Family
Mr. and Mrs. John Thomas
Ms. Linda Thompson and Mr. Timothy Mather
Mr. and Mrs. Tom C. Todd
Trigen-Oklahoma City Energy Corporation
TruGreen LandCare #6220
Dr. and Mrs. Kenneth Tucker
Mrs. Morrison G. Tucker
Ms. Dorothy J. Turk
Mr. and Mrs. Robert L. Turner

Mrs. Sam Utay
Mr. James Vallion
Ms. Jane Calloway Van Cleef
VanStavern Design Group
Dr. and Mrs. Thomas E. Vogel
Mr. and Mrs. Justin E. Vogt
Mr. and Mrs. Russell Walker
Dr. Timothy A. Walker
Ms. Jean M. Warren
Mr. and Mrs. H. B. Watson
Ms. Loretta M. Webber
Mr. Frank C. Weeks
Dr. and Mrs. Dennis Weigand
Dr. and Mrs. Ronald H. White
Dr. and Mrs. Thomas L. Whitsett
Mrs. Neta Wilson
Mr. Shane Woolbright
Mr. and Mrs. Denver W. Woolsey
Richard and Susan Wymer
Mr. and Mrs. William R. Yinger
Mr. and Mrs. Stanton L. Young
Thomas E. Young
Mr. and Mrs. Gabriel Zablatnik
Zahl-Ford, Inc.



Film actress Jane Seymour with students touring the Museum.

Museum Store

The Museum Store had another exceptional and exciting year. Accruing over \$250,000 in sales, the Store featured unique and exhibit related merchandise. Sales were increased by Museum-published exhibition catalogues for *Artist as Narrator*, *Mexican Masters*, and *Tempests and Romantic Visionaries*. This year also featured the Museum's second collaboration with Portland Press, the long awaited *Chihuly Oklahoma City* book of the Museum's Chihuly Collection. The cloth bound book features stunning photographs of the exhibition, as well as a history of this remarkable acquisition. In addition, the Museum Store was awarded the 2006 Retailer of the Year award from the Anne Mcgilvray National Showroom. The Store is open six days a week, with extended hours on Thursday evenings, and offers complimentary gift wrapping, gift cards, personal shopping, and special orders.



Museum Cafe

Achieving nearly \$1.4 million in sales and another successive year of profitability, the Museum Cafe continued to meet and/or exceed budget goals under General Manager Ahmad Farnia.

In addition to the popular sold-out Sunday brunches and Tuesday through Saturday luncheon and dinner services, a series of special dinners, wine tastings, holiday carry-out orders, and busy catering services served more than 600,000. Cafe al fresco patio dining and roof terrace cocktails and hors d'oeuvres remained popular seasonal services, and Afternoon and High Tea services increased dramatically.

Dinner and a Movie packages and several special exhibition themed dinners continued the strong partnership of Museum and Cafe.



treasurer's report

I am pleased to present the 2005-2006 Fiscal Year report on the Museum's sustained financial stability.

The Museum hosted 130,000 visitors during a year of exceptional exhibitions, expanded activity, and growth in Museum School and Film programs. The Museum continues to operate in the black for the twelfth consecutive year and remains debt free.

As illustrated below, the net assets reported in the Museum's audited financial statements are supplemented by investments held in the Oklahoma City Museum of Art Affiliated Fund at the Oklahoma City Community Foundation (OCCF).

The Fund's market value is \$5,792,401 for FY 2005-06, up from \$5,607,763 in FY 2004-05, reflecting stock market gains. In addition, the OCCF maintains an account for funds designated for Museum acquisitions of art (Designated Fund) in the amount of \$65,977. Combined, these amounts provide total net resources in the amount of \$40,039,404 for the Museum.

During FY 2005-06, the Museum reported total income of \$4,684,110 and total expenses before depreciation of \$4,283,181 or net revenue over expenses of \$400,929.

The Museum has entered Fiscal Year 2006-07 with a balanced budget, reflecting significantly increased programming investments, and continued conservative operational spending.

The 2006-07 focus is on outstanding exhibitions and programs as well as earned income and audiences.

The Museum continues to increase endowments for operations, arts education, and film. Efforts will be made to establish collections endowments and an increased exhibition deposit fund.

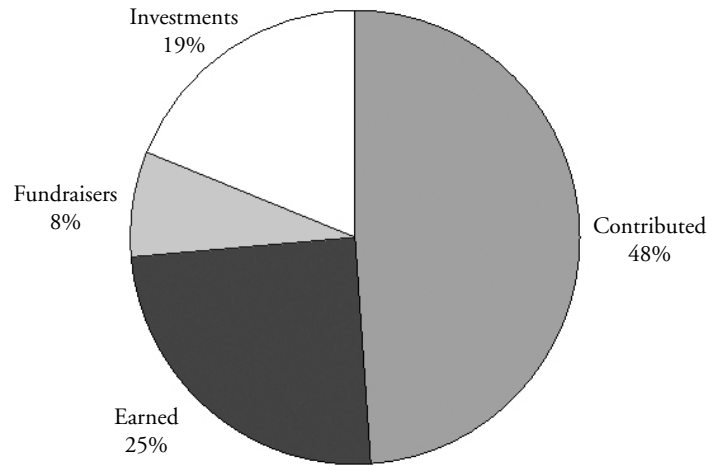
To assure the endowments are properly managed and invested wisely, the Investment Policy was revised, enhanced, and implemented. Additional safeguards included development of a Document Retention and Destruction Policy. With the establishment of a new, free standing Audit Committee, composed of appointed trustees and independent financial experts, additional oversight assures the Museum's mission is carried out according to the highest standards. I extend appreciation to the Board of Trustees and the Finance Committee for their oversight and counsel. I commend the staff for cooperation and exceptional commitment in the service of the Museum's mission.

David T. Greenwell
Treasurer

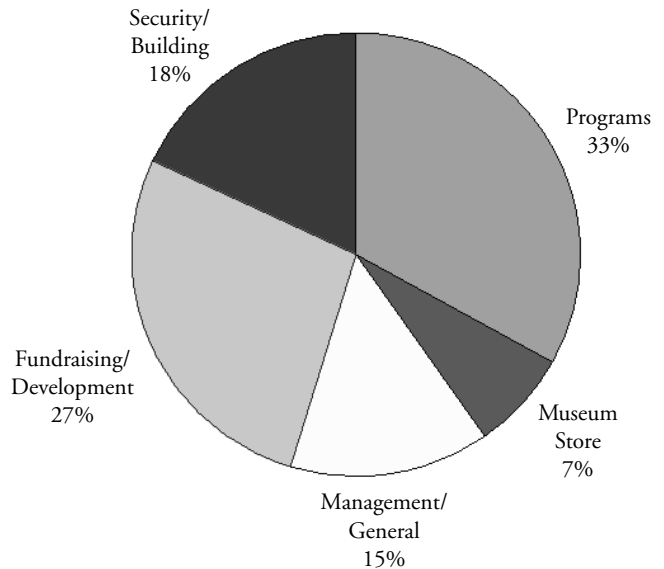
Year	Total Assets	Total Liabilities	Net Assets	Total Market Value of Investments at OCCF	Total Net Resources
2005-06	\$34,402,933	\$221,907	\$34,181,026	\$5,858,378	\$40,039,404
2004-05	34,671,305	222,596	34,448,709	5,672,985	40,121,694
2003-04	34,613,474	100,541	34,512,933	5,556,438	40,069,371
2002-03	34,833,849	133,598	34,700,251	5,100,737	39,800,988
2001-02	33,791,953	526,405	33,265,548	5,183,480	38,449,028

Fiscal Year 2005-06 Revenue and Expense Summary

Revenue	
Contributed	\$2,279,156
Earned	1,158,796
Fundraisers	353,543
Investments	892,615
Total	\$4,684,110



Expense*	
Programs	\$1,410,418
Museum Store	310,217
Management/General	625,914
Fundraising/Development	1,164,523
Security/Building	772,109
Total	\$4,283,181



*Excludes depreciation and art purchases.

2005-06 SEASON SPONSORS

The Inasmuch Foundation

Chesapeake Energy Corporation

GlobalHealth, Inc.

Kirkpatrick Family

MidFirst Bank

Bowers Foundation

Cox Communications

Devon Energy Corporation

Kerr-McGee Corporation

2005-06 PROGRAM ENDOWMENTS

Sarkeys Foundation and Sonic, America's Drive-In
Education Endowments

Thatcher Hoffman Smith Film Endowment

Oklahoma City **Museum of Art**

DONALD W. REYNOLDS VISUAL ARTS CENTER

415 Couch Drive

Oklahoma City, OK 73102

www.okcmao.com

(405) 236-3100